

The sky is the limit for GEMS Founders School, Al Barsha!

Dear Parents,

I would like to share with you one of the exciting developments that has been taking place at GEMS Founders School. In September 2019, the school joined the High Performance Learning (HPL) programme, with the aim of becoming a fully accredited HPL World Class School within the next few years. So, welcome to the first edition of our monthly 'High Performance Learning Newsletter' for parents.

Why have we joined the HPL programme?

The reason we are taking part is that, as a 'Good' school, we need to continue to strive for best practice in the classroom in order to positively impact on our learners outcomes and become truly 'Outstanding'. So, what does this mean for you?

What is HPL?

The HPL vision is based on the idea that all children, regardless of their background or starting point, can achieve the highest possible academic standards. At school we are passionate about promoting a 'can do' attitude and an ethos of growth. GFS teachers all believe that our learners can achieve anything providing they have the best learning environment and teaching for their personal and individual needs. We believe all parents share this same passion; however, we need to bring our thinking together and work closely to magnify the impact.

Professor Deborah Eyres, founder of HPL, has recently written a book aimed at parents. *'Great Minds and How to Grow Them'* shows us as parents how we can grow the minds of our children and guide them to success both at school and in life. Research is proving that most children are capable of reaching higher levels of performance that were previously associated only with the 'gifted and talented'.

We firmly believe as a school that given the right environments, support, time and passion, all children can achieve at levels far higher than previously thought. The GFS Learning Hive presently concentrates on how to develop children's values and attitudes as well as skills. This combined with an HPL approach and the right environments we provide at home and school, will equip them to leave here with the attributes that will help make them successful people.

The GFS Steering Groups

To support the development of this vision to fruition, the school has been busy generating and creating networks that we would like you to know about. We call these networks 'Steering Groups' and are extremely important to the development and long term success of HPL at Founders. Our 'Steering Groups' are the strategic backbone to our HPL journey and there are several of them already, from parents, to teachers, to student groups. The structure of this can be found on the next page.

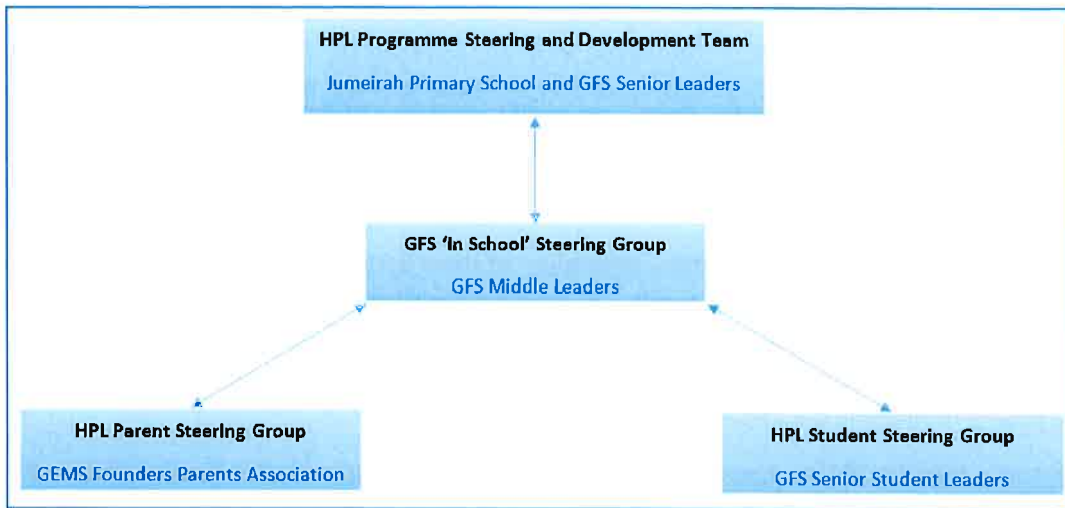
Your membership lies in the 'Parent Steering Group', which is led by our GEMS Founders Parents Association (GFPA). In the coming week, the school will be working with the GFPA to further explore how we are going to make HPL happen in our homes and what this might look like in action. Having read the parent HPL book, members of the GFPA are primed for their role in acting as a conduit from classroom to home in order to ensure we are all moving in the same direction.

Another steering group are the student leaders here in school. The GFS student leaders have been empowered to lead on aspects of HPL; focusing especially on addressing behavioural aspects of learning and personal growth in school and the wider community. In the coming months you will hear more about this wonderful team of ten student leaders as they engage the entire GFS community in their plans for success.

Our third steering group consists of members of the school Middle Leadership Team. This team meets every two weeks to discuss key aspects of HPL and strategically explore the next steps in our classrooms and beyond. Since we returned in the second term,

this group have been exploring 'Growth Mindset', 'The Power of Yet' and HPL through assemblies and in some lessons. This group of leaders are responsible for developing the changes to pedagogy and practice that will impact positively on student outcomes and lead us to being a World Class School; before training the wider teaching body at GFS to do the same. We will be capturing 'HPL style' learning and teaching which we will share each month in our GFS HPL newsletter.

The final steering group is a little different! GEMS Jumeirah Primary School (JPS) are 'Steering' Senior Leaders at GFS in becoming an accredited HPL World Class School. JPS begun their HPL journey a few years ago and have been identified by HPL as being a World Class School and are partnering us in our journey to achieve the same prestigious hallmark.



The engagement of all of the groups together, as two-way partnerships, will enable us to meet our vision of developing 'world-ready' citizens of the future on our path to becoming a World Class School. If you would like to learn more about HPL, you can purchase 'Great Minds and How to Grow Them' [here](#).

The Power of Yet

To begin your engagement in our journey, I encourage your to watch this short TEDX video about positive mindset and The Power of Yet <https://www.youtube.com/watch?v=J-swZaKN2Ic>. When you watch this video, consider what this might mean for the way in which you interact, communicate and encourage your child at home. Very soon, the GFS Parent Steering Group will be leading you on the next steps of your journey to purposefully put this into action.

What next?

Look out for our monthly newsletter all about HPL at GFS. This informative guide will deepen your understanding of HPL, the schools journey and development and how you can ensure our success by bringing it alive in your homes.

Kind regards,



Matthew Burfield

Principal/CEO – Founders Brand and School Group Leader