

As writers, we will:

- Develop our understanding of non-fiction texts as we research facts about Neil Armstrong.
- Develop our questioning skills as we become mini-interviewers.
- Explore the use of the 5Ws and how they are used effectively in information texts.
- Be able to create an informative text which is appropriate for its audience.
- Evaluate our own work, enabling us to make the needed edits to improve.

As artists we will:

- Develop a wide range of art and design techniques, using colour texture and shape.
- Produce creative work using our own ideas.

As designers we will:

- Design and create our own time machine.
- Evaluate our work, identifying what went well and what we could change for next time.

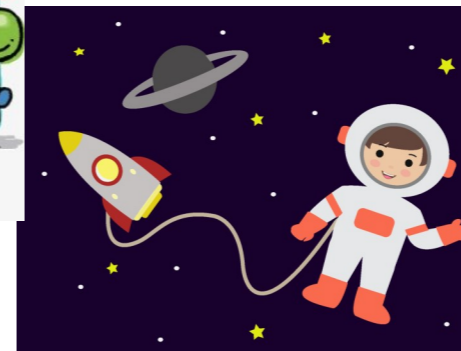
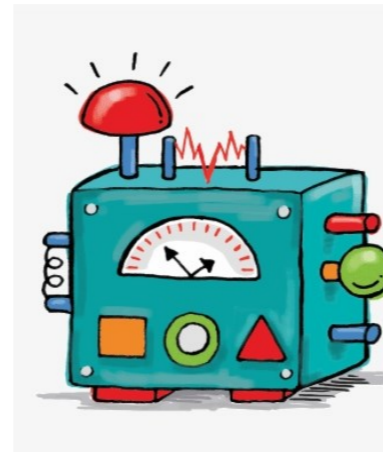
As scientists we will :

- Identify living and non-living things.
- Link our knowledge in order to compare the different stages of life.
- Research the life cycles of different animals, allowing us to make interesting comparisons.
- Investigate the different life stages of a plant.

GFS High Performance Learning Skills



If you could travel anywhere in time, where would it be to? Would you like to go back in time? Or do you want to visit the future. The choice is yours.



As readers, we will:

- Be exploring "The Time Travelling Caveman" written by Terry Pratchett.' as a class.
- Draw upon our prior knowledge and use clues within a text in order to make accurate predictions.
- Deduct information from a text in order to infer how a character might be feeling.
- Develop our fluency skills as we continue to read texts from a range of genres.

As mathematicians, we will :

- Explore the use of pictograms and tally charts and go onto create our own.
- Measure different objects in centimeters and meters using a ruler and a meter stick
- Exploring the properties of 2D and 3D shapes.

As geographers we will:

- Look at different celebrations from around the world.

As citizens' of the UAE we will:

Be focusing on exploring people which are important to us our core values are appreciation and support.

GFS Curriculum Drivers linked to the National Agenda

Enterprise and Innovation	Eco and Environment	Inclusive Communities
As enterprising children, we will design a time machine and explain where we would travel to.	As people concerned with the environment, we will use sustainable materials when building our time machines.	As members of a community, we will explain how to care for our school community.

Opportunities for Enrichment	
School	Home
We will be going on our Expo trip in which children will explore the different pavilions.	Learn about celebrations from different family members and neighbours.